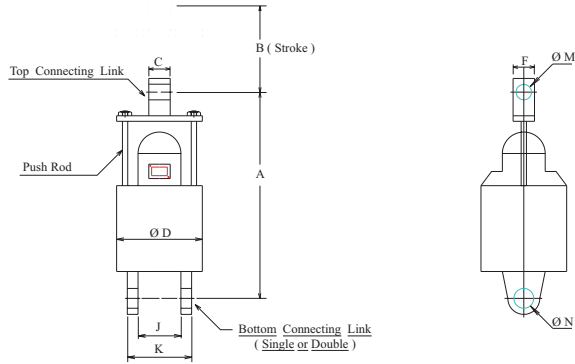


## ELECTRO HYDRAULIC THRUSTOR



Model	Thrust in Kg.	A	B (Stroke)	C	F	D	J	K	L	M	N	Thrustor Watage	Thrustor Weight in Kg.
TH-8	8	284	30	17	17	140	-	-	125	10.2	10.2	270	10.00
TH-18	18	362	50	18	19	160	-	-	115	13	13	300	15.00
TH-34	34	433	50	25	25	170	-	-	175	13	13	325	21.00
TH-45	45	433	75	25	25	170	-	-	175	13	13	325	21.00
TH-75	75	509	50	25	25	190	60	120	145	16	24	425	31.00
TH-115	115	509	75	25	25	190	60	120	145	16	24	250	34.00
TH-185	185	600	60	40	40	250	80	160	145	25	27	200	45.00
TH-185	185	700	160	40	40	250	80	160	145	25	27	200	50.00

Note - 1) For 18 Kg. Thrustor no push rod assembly.

2) For 8 , 18 , 34 , 45 Kg. Thrustor bottom connecting link is at centre of the tank cover.

Drg. No.- TH / STD. / 2007 / 1002



**PETHE BRAKE MOTORS PVT. LTD. GUHAGAR- 415 703.**